

LVH-ERC

BD TE/FE BCA Checker

BD Media Defect Checker

Reference Drive BD-ROM/R/RW

- Pioneer BDR-203/205
 - Support 1X~8X Speed Measuring
- Support Media Type

- BD-ROM SL/DL
- BD-R SL/DL
- BD-RE SL/DL

Measuring SUM / FE / TE at one sequence

Auto Calibration Function support

BCA Code Check

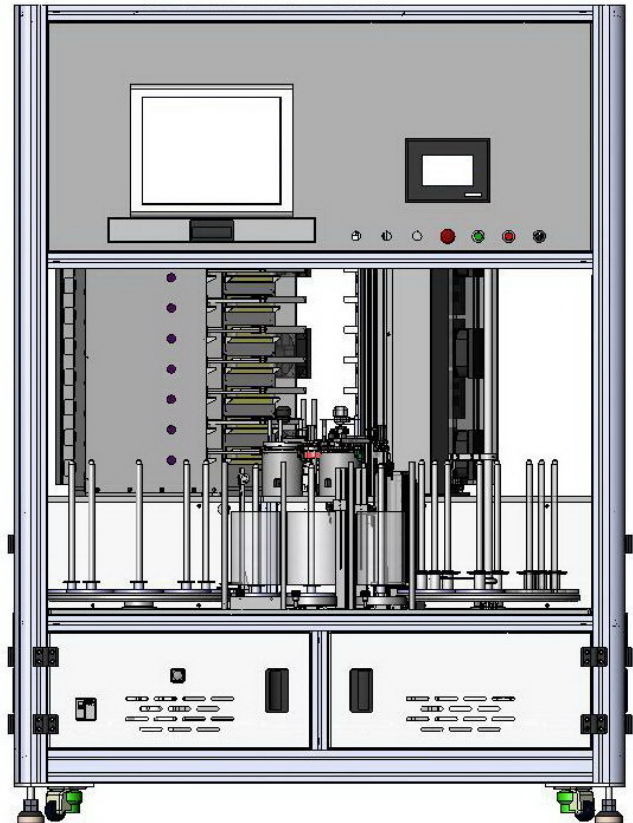
BCA TT/TL measurement (2T · 3T · 4T · 5T)

8 supply/release index and 3 NG stockers

failure disc can be easily judged by the location (1200 pc Disc Supply Capacity)

NG Disc Re-Check Function

Up to 36 Drives



test.hnde

Parameter	Media	BD-R SL	BCA	Layer 0	Measura	Layer 1
Lot Rate	21.0%	74.6%	0%			100%
Status	AUTO		NORMAL		START	

Drive	Information	Status	Position	Rate	Drive	Information	Status	Position	Rate	Drive	Information	Status	Position	Rate
34	OK1	Disc	LO 0.000mm	0.0%	35	OK1	Disc	LO 0.000mm	0.0%	36	OK1	Disc	LO 0.000mm	0.0%
		Open	Pos0 0h	100.0%			Open	Pos0 0h	100.0%			Open	Pos0 0h	100.0%
31	OK2	Disc	LO 0.000mm	0.0%	32	OK2	Disc	LO 0.000mm	0.0%	33	OK1	Disc	LO 0.000mm	11.1%
		Open	Pos0 0h	100.0%			Open	Pos0 0h	100.0%			Open	Pos0 0h	100.0%
28	NG	Disc	LO 0.000mm	0.0%	29	OK2	Disc	LO 0.000mm	0.0%	30	OK1	Disc	LO 0.000mm	0.0%
		Open	Pos0 0h	100.0%			Open	Pos0 0h	100.0%			Open	Pos0 0h	100.0%
25	OK2	Disc	LO 0.000mm	0.0%	26	OK2	Disc	LO 0.000mm	0.0%	27	NG	Disc	LO 0.000mm	0.0%
		Open	Pos0 0h	100.0%			Open	Pos0 0h	100.0%			Open	Pos0 0h	100.0%
22	OK2	Disc	LO 0.000mm	0.0%	23	OK1	Disc	LO 0.000mm	0.0%	24	OK1	Disc	LO 0.000mm	11.8%
		Open	Pos0 0h	100.0%			Open	Pos0 0h	100.0%			Open	Pos0 0h	100.0%
19	OK2	Disc	LO 0.000mm	0.0%	20	OK1	Disc	LO 0.000mm	0.0%	21	OK1	Disc	LO 0.000mm	0.0%
		Open	Pos0 0h	100.0%			Open	Pos0 0h	100.0%			Open	Pos0 0h	100.0%
16	OK1	Disc	LO 0.000mm	0.0%	17	OK2	Disc	LO 0.000mm	0.0%	18	OK2	Disc	LO 0.000mm	0.0%
		Open	Pos0 0h	100.0%			Open	Pos0 0h	100.0%			Open	Pos0 0h	100.0%
13	OK1	Disc	LO 0.000mm	0.0%	14	NG	Disc	LO 0.000mm	0.0%	15	NG	Disc	LO 0.000mm	0.0%
		Open	Pos0 0h	100.0%			Open	Pos0 0h	53.3%			Open	Pos0 0h	100.0%
10	OK1	Disc	LO 0.000mm	0.0%	11	OK1	Disc	LO 0.000mm	0.0%	12	NG	Disc	LO 0.000mm	0.0%
		Open	Pos0 0h	100.0%			Open	Pos0 0h	100.0%			Open	Pos0 0h	100.0%
7	OK2	Disc	LO 58.055mm	40.5%	8	OK2	Disc	LO 0.000mm	38.0%	9	OK2	Disc	LO 58.055mm	18.2%
		Open	Pos0 195C15h	58.3%			Open	Pos0 0h	73.0%			Open	Pos0 195C15h	73.7%
4	OK2	Disc	LO 58.055mm	35.4%	5	OK2	Disc	LO 58.055mm	35.6%	6	OK1	Disc	LO 58.055mm	25.0%
		Open	Pos0 195C15h	61.0%			Open	Pos0 195C15h	64.4%			Open	Pos0 195C15h	75.0%
1	OK2	Disc	LO 58.055mm	31.3%	2	OK1	Disc	LO 0.000mm	33.3%	3	NG	Disc	LO 58.055mm	32.5%
		Open	Pos0 195C15h	60.7%			Open	Pos0 0h	66.7%			Open	Pos0 195C15h	69.0%

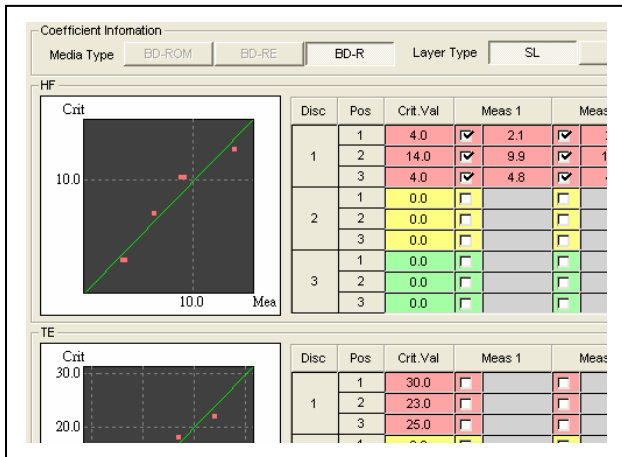
Ready NUM 2009/11/17 下午 03:06:24

Friendly User Interface

Easy to setting

Common Position Judge BCA															
Layer0															
Position		Speed	Meas Item			Start		End		Measure		Skip		Meas Rate	
Zone	Exe		Def	Srv	Ref	Address	Radius	Address	Radius	Tracks	Length	Tracks	Length		
	<input checked="" type="checkbox"/>	1	4x	<input checked="" type="checkbox"/>	<input checked="" type="checkbox"/>	<input checked="" type="checkbox"/>	20000h	24.00mm	34770h	27.00mm	1	0.32um	312	99.84um	0.32%
	<input checked="" type="checkbox"/>	2	4x	<input checked="" type="checkbox"/>	<input checked="" type="checkbox"/>	<input checked="" type="checkbox"/>	34770h	27.00mm	4B560h	30.00mm	1	0.32um	312	99.84um	0.32%
	<input checked="" type="checkbox"/>	3	4x	<input checked="" type="checkbox"/>	<input checked="" type="checkbox"/>	<input checked="" type="checkbox"/>	4B560h	30.00mm	649D0h	33.00mm	1	0.32um	312	99.84um	0.32%

Auto Coefficient



BCA Checker

Common Position Judge BCA														
Signal Check														
Slice Level										75.0%				
										-Lim	+Lim	Judge		
Mark	Level	<input checked="" type="checkbox"/>	50.0%									5		
	Width	<input checked="" type="checkbox"/>	0.9us							3.9us		5		
TL	1T		4.5us							7.1us				
	2T		10.2us							12.9us				
	3T		16.0us							18.7us				
	4T		21.9us							24.5us				
	5T		27.7us							30.3us				
Error Count		<input checked="" type="checkbox"/>										5		

Easy to Management

Administrator | User-1 | User-2 | User-3 | User-4

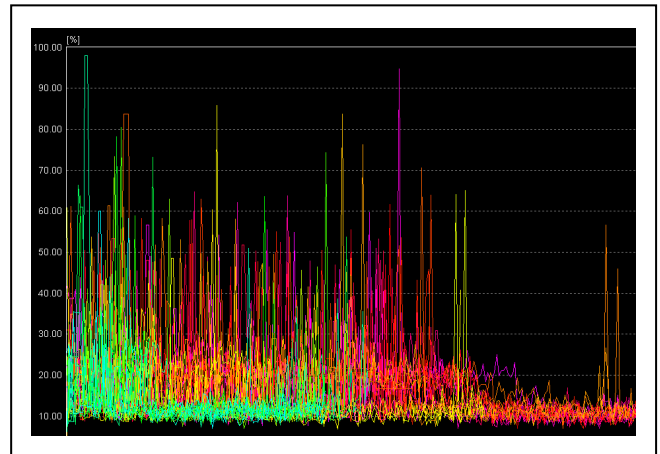
Password: Use Password Lock

Target menu item

<p>File</p> <input checked="" type="checkbox"/> Open drive parameter <input checked="" type="checkbox"/> Save drive parameter <input checked="" type="checkbox"/> Save As drive parameter <input checked="" type="checkbox"/> Open calibration parameter <input checked="" type="checkbox"/> Save As calibration parameter <input checked="" type="checkbox"/> Save all coefficient file <input checked="" type="checkbox"/> Write CSV all coefficient file <input checked="" type="checkbox"/> Select Function-key file	<p>System</p> <input checked="" type="checkbox"/> System Parameter
<p>Drive</p> <input checked="" type="checkbox"/> Measure Parameter <input checked="" type="checkbox"/> Calibration Parameter	<p>Logging</p> <input checked="" type="checkbox"/> File logging <input checked="" type="checkbox"/> Counter reset
<p>Function-key</p> <input checked="" type="checkbox"/> Function-key File Change	<p>Lot No.</p> <input checked="" type="checkbox"/> Lot Input

確定 Cancel

Graph



Likuan Tech Corp.

12F-8,NO.258 ,Laincheng Rd.Junehe City,Taiwan,

Tel:+886-2-82271336

Fax:+886-2-82271339

<http://www.likuan.com.tw>