

LVH - 4000

DVD-R Auto Pre-write Handler

***** Parameter File is not found! *****

Parameter	DVD-R SL	PI	VF	PI	SL 6x	---	MD	---	---	Date	Time	Message
Lot No.										2009/07/22	15:46:54	LOAD ERROR Drive parameter File
Lot Rate	0%	0%								2009/07/22	15:46:53	SAVE System File
Status	MANUAL									2009/07/22	15:44:47	LOAD ERROR Drive parameter File
										2009/07/22	15:44:46	LOAD System File
										2009/07/21	15:32:15	SAVE System File
										2009/07/21	17:41:26	LOAD ERROR Drive parameter File
										2009/07/21	17:41:27	LOAD System File
										2009/07/21	13:21:02	SAVE System File
										2009/07/21	13:19:58	LOAD ERROR Drive parameter File

Drive	Warning	Status	Temp	Speed	Power	PI	TE	FE	OK%	NG%	Tad
Drive-1	NO DRIVE	Temp Tray Stop	---	1x	---	0.00	---	---	0.0%	0.0%	
Drive-2	NO DRIVE	Temp Tray Stop	---	1x	---	0.00	---	---	0.0%	0.0%	
Drive-3	NO DRIVE	Temp Tray Stop	---	1x	---	0.00	---	---	0.0%	0.0%	
Drive-4	NO DRIVE	Temp Tray Stop	---	1x	---	0.00	---	---	0.0%	0.0%	
Drive-5	NO DRIVE	Temp Tray Stop	---	1x	---	0.00	---	---	0.0%	0.0%	
Drive-6	NO DRIVE	Temp Tray Stop	---	1x	---	0.00	---	---	0.0%	0.0%	
Drive-7	NO DRIVE	Temp Tray Stop	---	1x	---	0.00	---	---	0.0%	0.0%	
Drive-8	NO DRIVE	Temp Tray Stop	---	1x	---	0.00	---	---	0.0%	0.0%	
Drive-9	NO DRIVE	Temp Tray Stop	---	1x	---	0.00	---	---	0.0%	0.0%	
Drive-10	NO DRIVE	Temp Tray Stop	---	1x	---	0.00	---	---	0.0%	0.0%	
Drive-11	NO DRIVE	Temp Tray Stop	---	1x	---	0.00	---	---	0.0%	0.0%	
Drive-12	NO DRIVE	Temp Tray Stop	---	1x	---	0.00	---	---	0.0%	0.0%	
Drive-13	NO DRIVE	Temp Tray Stop	---	1x	---	0.00	---	---	0.0%	0.0%	
Drive-14	NO DRIVE	Temp Tray Stop	---	1x	---	0.00	---	---	0.0%	0.0%	
Drive-15	NO DRIVE	Temp Tray Stop	---	1x	---	0.00	---	---	0.0%	0.0%	
Drive-16	NO DRIVE	Temp Tray Stop	---	1x	---	0.00	---	---	0.0%	0.0%	



Features

- Reference Drive DVD-R/RW
 - ※ DVR-A10,A12,A15,A17 For Pioneer
- Pre-write
 - ※ Both DVD – R SL / DL Pre-write are supported
- TE·FE Measurement (Optional)
 - ※ TE/FE OK·NG judgment
- 8 supply/release index and 3 NG stockers
 - ※ 1200 pc Disc Supply Capacity
 - 150 [per stocker] × 8 [stocker] = 1200pc
 - Non Pre-Write/After Pre-Write or TE/FE failure disc can be easily judged by the location.
- High speed disc supply/release is achieved with 2 handling arms
- 14 Drive can be set
- Supported CPRM disc Pre-write

Functions

- Write Strategy setting
- Record Power can be obtained (by OPC)
- PI Error check

Basic Specification

Height : 1150mm (W) × 2150mm (H) × 1280mm (D)
Including Signal Tower

Weight : Less than 450kg

- Power Supply : AC220V±10%
- Frequency : 50/60 Hz
- Power Consumption : 2500W
- Air Pressure : Over 0.5MPa
- Air Consumption : Below 150L/min

LVH- 4000

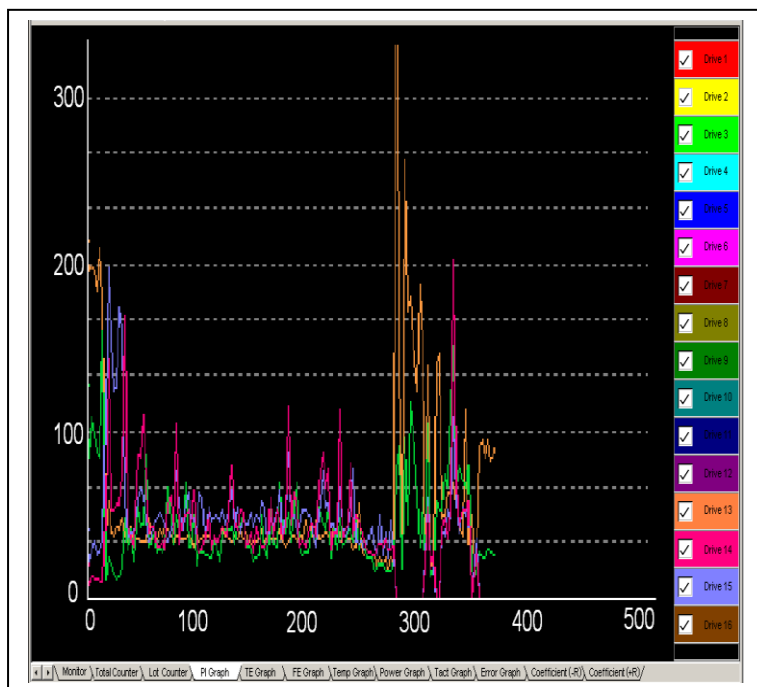
DVD-R Auto Pre-write Handler

Extended Pre-write

Write-Strategy

Pioneer Drive

TE/FE Graph



TEL: +886-2-82271336
FAX: +886-2-82271339

E-Mail: likuan@likuan.com.tw
Web: <http://www.likuan.com.tw>

235 台北縣中和市連城路258號12樓之8
235 12F, I-8, NO.258, Liancheng Rd.,
Junghe City, Taipei, Taiwan, R.O.C.